



# SMART CAT S280

[www.s-comtech.com](http://www.s-comtech.com)  
[www.smartcatamarans.com](http://www.smartcatamarans.com)





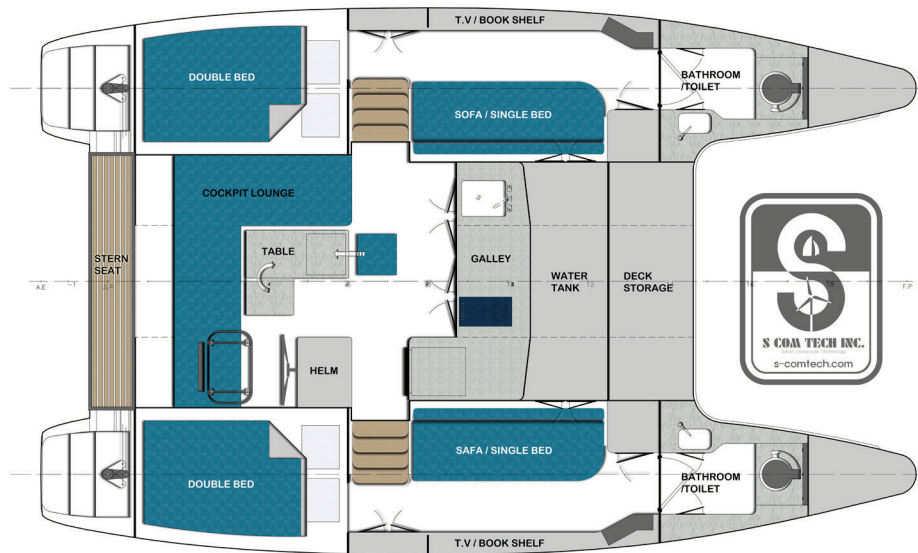
# Go Aboard and Enjoy Your Holiday on the SMART CAT S280

S Com Tech launched the SMART CAT S280 to satisfy the demand on the unique design, smart layout and use of space. SMART CAT S280 is an initial sailing catamaran for entry-level customers such as young couples, a family and people who just started sailing.

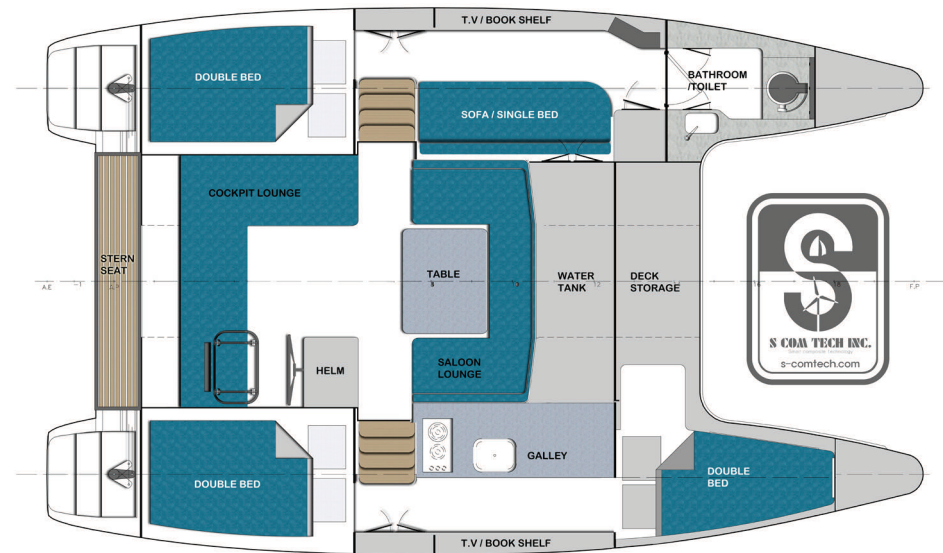




The interior of the US version features a central galley with rear seating, allowing each hull to mirror each other with a bedroom, bathroom and private space.  
In the 3-cabin type interior, 3 cabins are placed in the stern and single bow side, the bathroom is placed in the single bow side.



SMART CAT S280 INTERIOR PLAN - 2CABIN, 2 BATHROOM AND CENTRAL GALLEY



SMART CAT S280 INTERIOR PLAN - 3CABIN, 1 BATHROOM

## Dimension and Equipment

Length Overall 8.5m / 28ft

Breadth 5.29m / 17.4ft

Draft 0.89m / 2.9ft

Underwing Clearance 0.575m / 1.9ft

Main Sail Area 38.8m<sup>2</sup> / 417 ft<sup>2</sup>

Furling Jib Sail Area 16.2 m<sup>2</sup> / 174 ft<sup>2</sup>

Genoa Area 32m<sup>2</sup> / 344 ft<sup>2</sup>

Fuel 45 liter / 12 US gallon

Fresh Water 135 liter / 36 US gallon

Holding Tanks 88 liter / 23 US gallon

Displacement 4.5 ton ( Vacuum Infusion laminate 4 ton – optional)

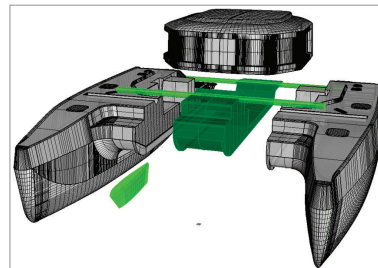
Dual 9.9 HP High Thrust Outboard Engine

(Dual Inboard Engine - optional)

Stainless Steel Steering Wheels



The SMART CAT S280, the smallest cruise sailing catamaran in the world, provides you the simplicity and practicality with attractive exterior.  
 SMART CAT S280 is furnished with simple and modern interior. You can easily single handedly sail as a couple or a family comfortably.  
 Take a rest and enjoy your holidays on the SMART CAT S280.



The SMART CAT S280 has been developed to compete with monohull market as we believe there are no reasonably priced catamarans in that sector, even though catamaran can accommodate more people sitting around the dining table or having a party than a monohull.



## SMART CAT S280 HOUSE

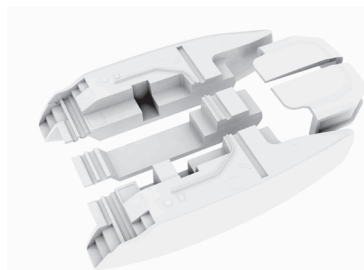


## SMART CAT S280 OPEN



### Selling FRP Hull Kit Model

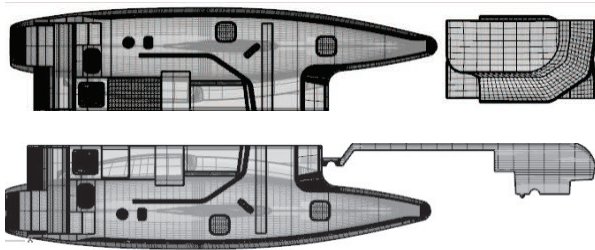
FRP hull kit version of SMART CAT S280 is now on the market so that customers can customize their own yachts from assembly to finish.



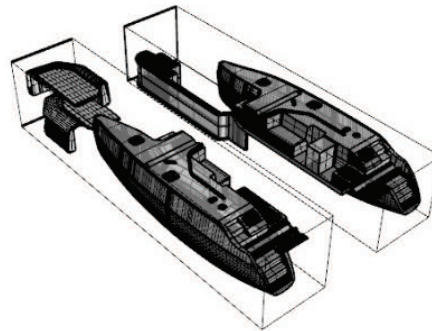


As for cruising yachts, transportation is quite tricky and costly considering the added cost of a carrier vessel. Hence, S Com Tech devised the way to separate the boat and was able to put the yacht into two of 40ft HQ containers. S Com Tech set LOA as 28ft to be able to loaded onto 40ft HQ containers, but keep the minimum size for user's sailing convenience. In terms of LOA, SMART CAT S280 is 7ft shorter than other competing models, but the beam is 17.4ft. The breadth should be at least 16.4ft to be furnished with three or four bed rooms, a galley and a bathroom.

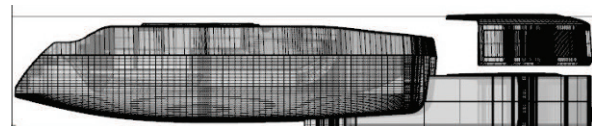
Top



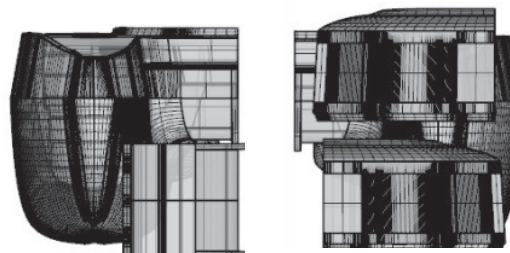
Perspective



Front



Right



SMART CAT S280 can be shipped anywhere, at a lower cost of shipping than finished product transportation.





A flat deck design and minimized equipment makes it easy for users to actively move around with extra space put items. The forward deck features a 6-foot trampoline that can be used for adjusting the trim or lounging coupled with an 18-inch-high step structure that can be used as a seat.

And there will be a targa made of pipes and hardwood for sitting. The main track will be moved onto top of targa. The targa can also be used to mount solar panels or a dinghy. The cockpit will be enclosed by connecting hardtop and targa.



Name-card



Manufactured by.



Composite based R&D center,  
8, Sudang-gil, Joseong-myeon,  
Boseong-gun, Jeonnam 59440, Korea  
+82 61 835 6671 [www.s-comtech.com](http://www.s-comtech.com)

dealer by.



***USA Yacht Export***

1835 E. Hallandale Beach Blvd. #186,  
Hallandale Beach, Florida 33009, USA  
+1 207 590 1939 [www.usayachtexport.com](http://www.usayachtexport.com)



전라남도 수출정보망  
JeollaNamdo Export Information

<http://www.jexport.or.kr>

This promotional material was produced with  
support of Jeollanamdo province in 2017.

